

**Utilizare WMS maps.chisinau.md
in JOSM (Java OpenStreetMap Editor)**

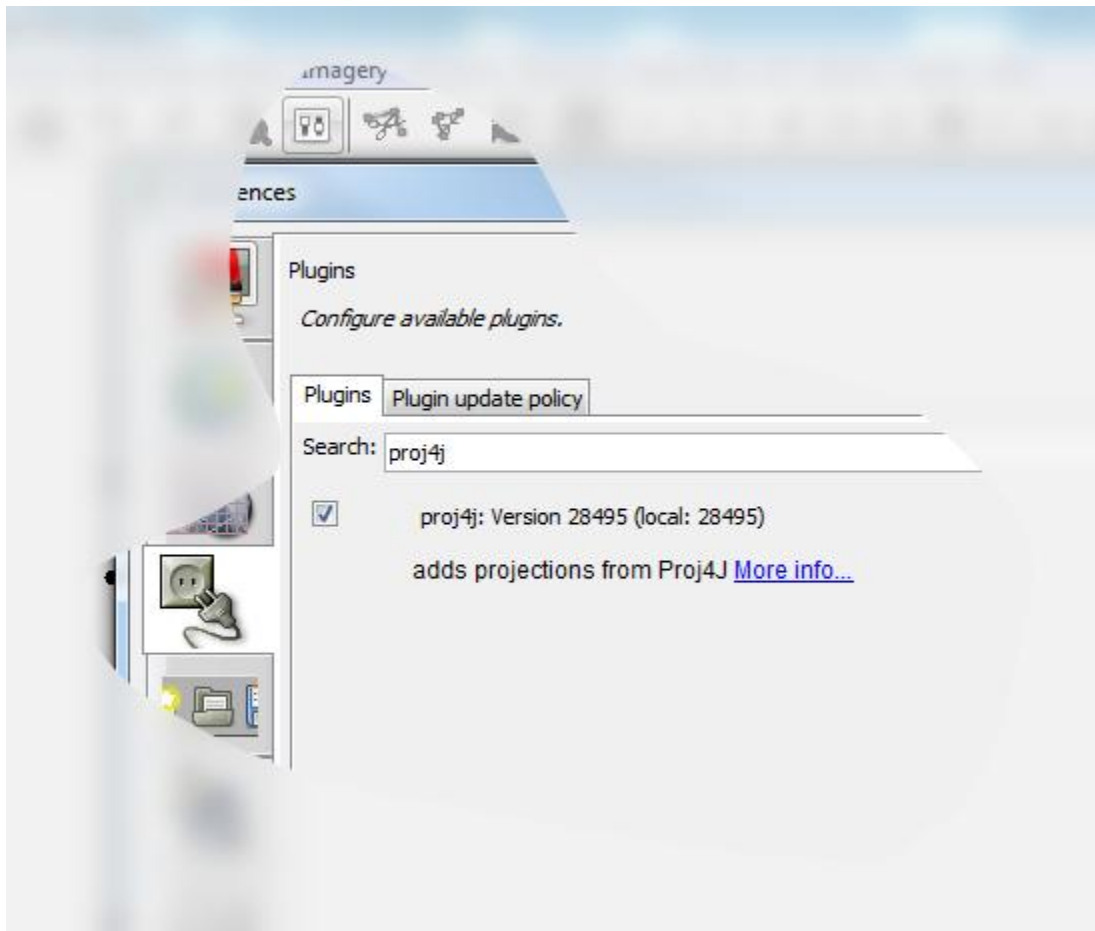
Updated 11 Feb 2013

Contents

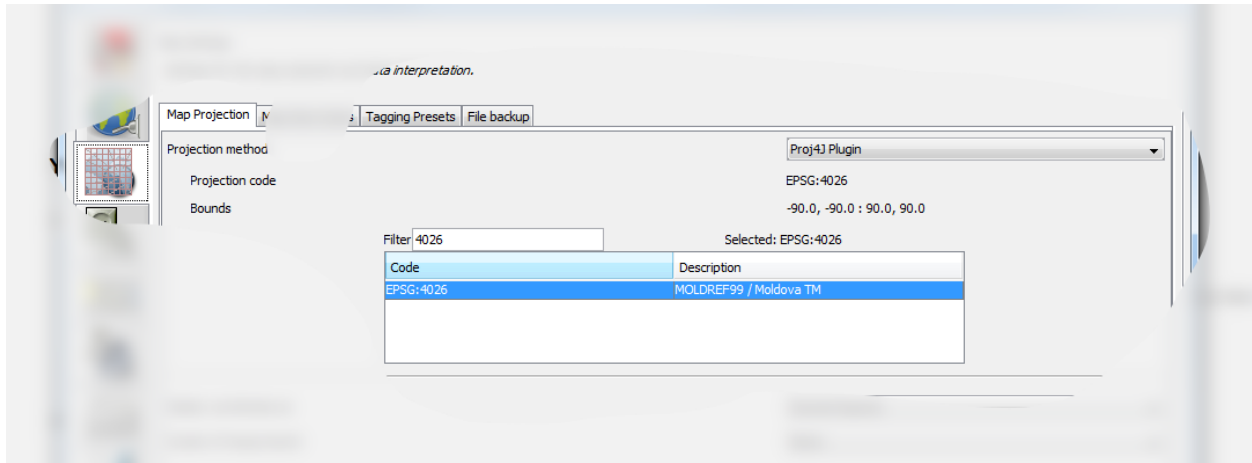
1. Moldreff99 in JOSM	3
• Instalare plugin proj4j	3
• Adaugare proiectie MOLDREFF99 ca default in JOSM	4
2. Adaugare WMS	4

1. Moldreff99 in JOSM

- Instalare plugin proj4j



- Adaugare proiectie MOLDREF99 ca default in JOSM



2. Adaugare WMS

<http://map.chisinau.md/wms?version=1.1.0>

